

Approved by **FDA** and **CE**



# CHISON Q5

Superior Orthopedic and Podiatric Imaging



**CHISON**





The CHISON Q5 is a portable color Doppler ultrasound system specifically configured for musculoskeletal applications and the diagnostic and procedural needs of podiatric and orthopedic practices.

The Q5 delivers superb image quality across a wide range of applications, both in black and white and in color, and opens up an entire range of vascular procedures.

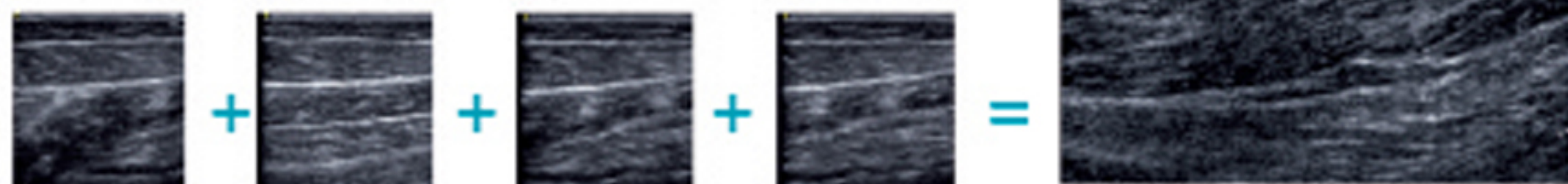
The linear 4 - 13 MHz transducer offers the broadest frequency range in its class, and combined with the advanced imaging made possible through SRA (Speckle-Reduction), Compounding, Trapezoidal Expansion, Variable Speed, and Tissue harmonics, the diagnostic capacities of the Q5 are truly extraordinary.

The work flow on the Q5 has been refined specifically with musculoskeletal imaging in mind and is particularly effective for podiatry and orthopedic applications. The 15-inch LCD display makes viewing your ultrasound image a delight. Custom presets make finding the best image quick and easy. The keyboard layout has been engineered for rapid adjustments, speeding along your exams. An entire arsenal of annotations makes placing notes on your image effortless. And saving images to USB (or sending them through DICOM to your network) takes no more than a few seconds.

The ease of operation on the Q5 enables you to perform your ultrasound exams and procedures smoothly and effectively, so you can focus more on your patients.

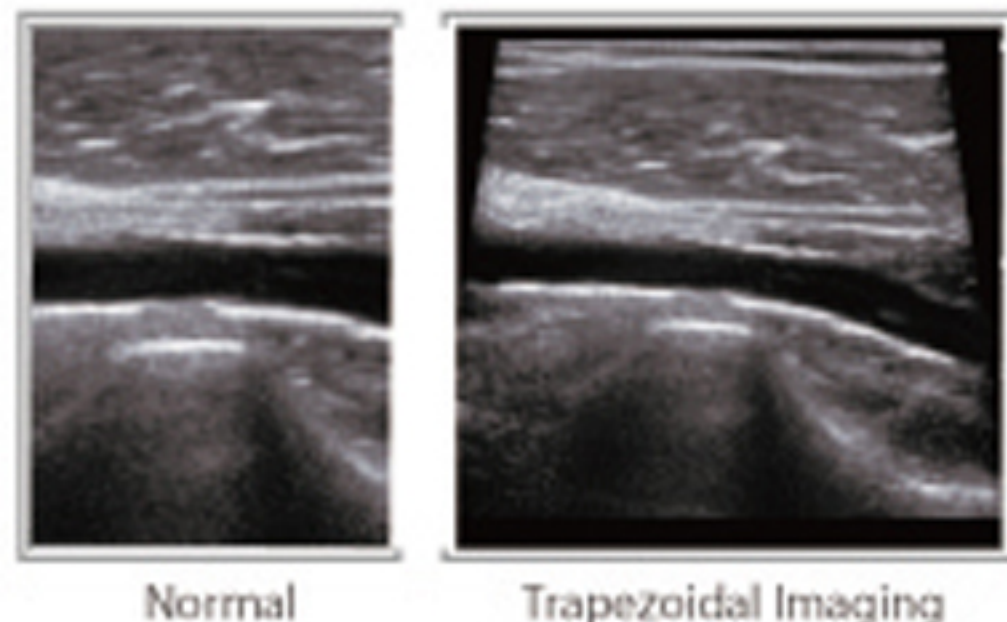
## Panoramic Imaging

Extend your view to a wider field for diagnosis of a big lesion, muscle or thyroid.



## Trapezoidal Imaging

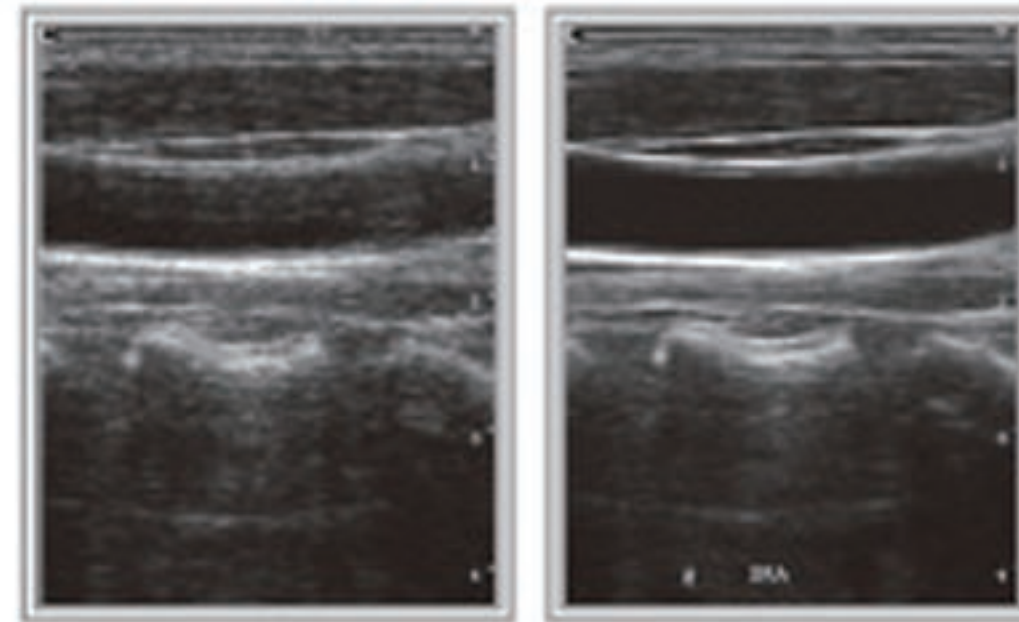
Extend field-of-view sonography and provide the anatomic context of the lesion in its surroundings and allowed precise measurement.





## SPECKLE REDUCTION ALGORITHM (SRA)

SRA enables the ultrasound to employ assorted image-rendering algorithms to remove noise, suppress speckle, and smooth your ultrasound images, all while refining the faintest edges and providing you with greater clarity and superior results.

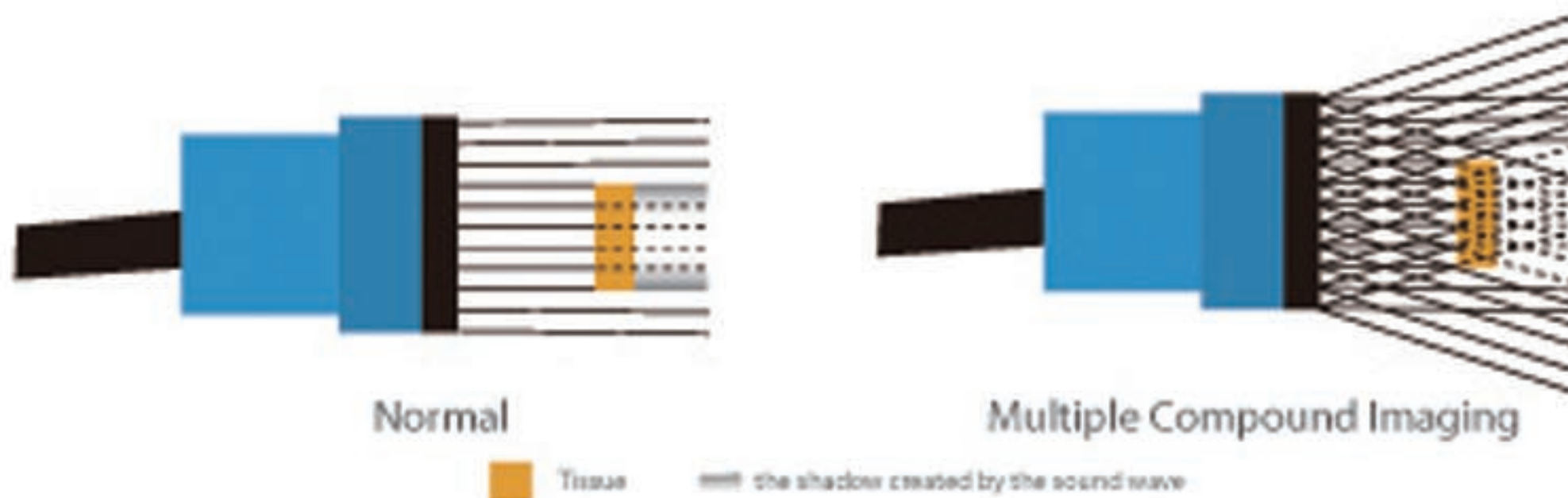


Normal

SRA

## Multiple Compound Imaging (MCI)

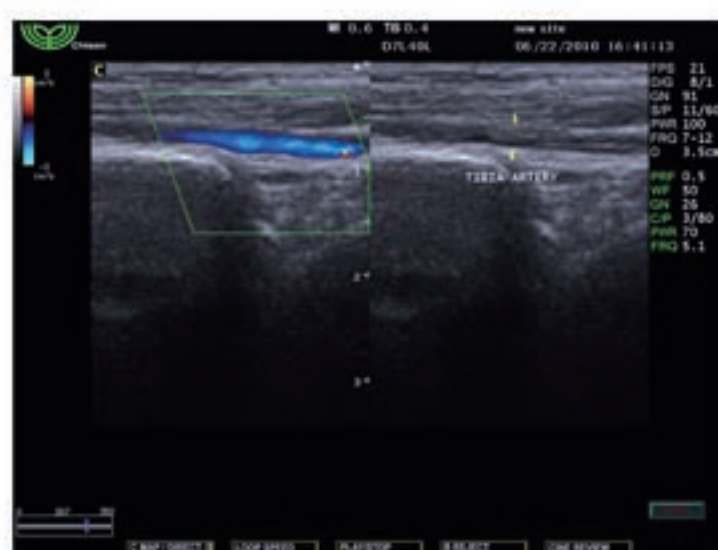
- Increase the line density and improve the image quality
- Improve the contrast resolution
- Decrease the sidewall effect of the edge on the tissue and make the edge of the organ more distinguishable



Normal

Multiple Compound Imaging

■ Tissue      ▨ the shadow created by the sound wave



Tibia artery, Foot



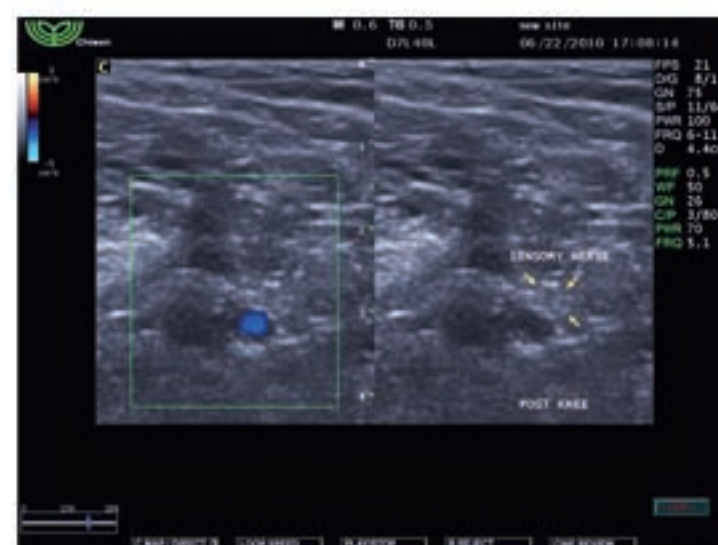
Ulnar nerve, Elbow



Biceps, Shoulder



Lateral epicondyle, Elbow



Sensory nerve, Post knee



Patella tendon, Knee



# SPECIFICATIONS

## Imaging modes

- B, 2B, 4B
- B/M
- CFM, B/BC
- PW, HPRF
- CW
- PD, Directional PD

## Probe

- Electronic Convex, Electronic Linear, Electronic Micro-convex, Electronic Phased array
- Wideband Multi-frequency

## Image processing technology

- Double Phase Digital Beam Forming (DPDBF)
- i-Image™
- Multiple Compound Imaging
- Speckle Reduction Algorithm (SRA)
- THI on all probes
- TSS
- Duplex, Triplex
- Trapezoidal
- Panoramic
- Free-Hand 3D

## Measurement & Report packages

- OB & GYN
- Vascular
- Urology

## Professional Clinical Applications

- Abdominal
- OB & GYN
- Small parts
- Vascular
- Pediatrics
- Musculoskeletal

## Standard hardware configuration

Main unit, 15" LCD, 2 probe connectors,  
Hard disk, 2 USB ports, Video out, TV out, LAN port, VGA out

## Options

- i-Image™
- Multiple Compound Imaging
- CW
- Panoramic
- Free-Hand 3D
- TSS
- DICOM
- Convex probe 2.0-5.8Mhz
- Linear probe 4.0-13.0Mhz
- Micro-convex transvaginal probe 3.0-8.2Mhz
- Phased array probe 2.0-4.1Mhz
- Biopsy kit (probe dependent)
- Video printer, PC printer
- Trolley

## CHISON MEDICAL IMAGING CO., LTD.

### Factory Address:

NO.8, Xiang Nan Road, Shuo Fang, New District, Wuxi, Jiang Su Province, CHINA 214142

### Sales & Service Contact Address:

No. 9 Xin Hui Huan Road, New District, Wuxi, Jiang Su Province, China 214028

TEL: 0086-510-85310583 / 85310607 FAX: 0086-510-85310728 EMAIL: export@chison.com.cn

### US service base:

TEL: 001 408-551-0833 FAX: 001 408-551-0823

Toll free: 877-771-0133 EMAIL: service@chison.com.cn

[www.chison.com.cn](http://www.chison.com.cn)

We reserve the right to make changes to this catalogue without prior notice.  
Please contact our local dealer for the latest information.