

# SIUI

SHANTOU INSTITUTE OF ULTRASONIC INSTRUMENTS, INC.

## CTS-385 Plus

Portable Linear/Convex Ultrasound Scanner



High value Imaging

Measurement and calculation of Cardiology

CINELOOP

A wide-range selection of probes



FDA

CE



0459



## Product General Information

The CTS-385 Plus is designed for the diagnosis of liver, gallbladder, kidney, pancreas, thyroid, breast, uterus, bladder, ovary, etc. The system is a portable linear and convex unit for general application.



## Foldable Keyboard



## Dual Probe Connectors



It is equipped with double probe connectors for ease of use



## CineLoop



Cine Memory for your picking out any better diagnostic image.

## Multi-frequency probes of broad band

Switch the probe frequency with the keyboard in a moment. This allows the clinician to select the best frequency for both the specific exam and patient. The result optimizes resolution and penetration, and requires fewer scanheads.



Wide-range selection of probes for your convenience in every application.

3.5 MHz Convex Probe



7.5MHz Linear Probe



7.5MHz Transrectal Probe



5.0MHz Transvaginal Probe

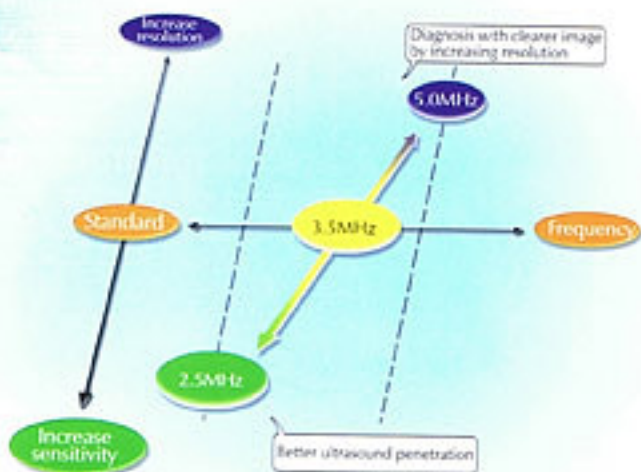


5.0MHz Convex Probe



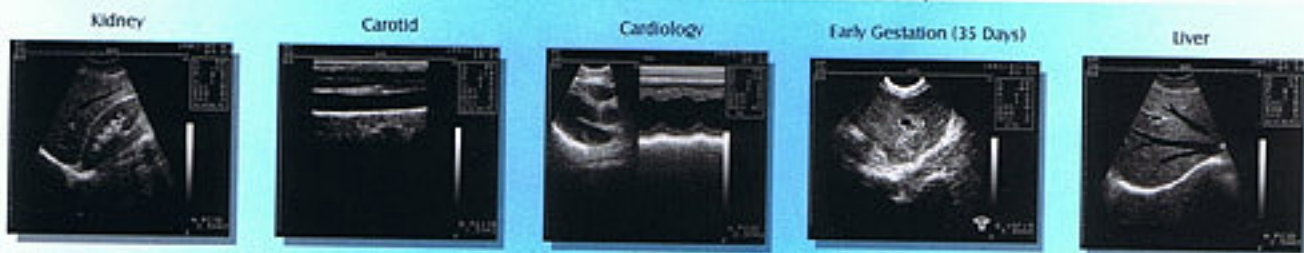
(frequency above refers to center frequency)

SIUI is able to supply a full line of ultrasound systems and a wide range of probes at affordable prices. Product and service supports from SIUI are reliable and sustainable.



☆ Synergy of high resolution, good ultrasound penetration and clear diagnosis imaging

## High quality image



## • Main Specifications:

1	Appearance	Portable, 7-inch high resolution monitor, foldable keyboard
2	Scanning System	Convex and Linear Scanning
3	Scanning Mode	B, B/M, M, B+B Mode
4	Scanning angle	Max. 90°
5	Probe Frequency	2.5MHz~10MHz, linear and convex
6	Focusing Method	Multi-step focusing with variable aperture
7	Zooming	Image zooming as well as depth shift
8	Image Processing	Pre-processing, Correlation-processing, Interpolation, $\gamma$ Correction(selectable)
9	Measurement & Calculation Functions	Distance, Area, Circumference, Volume, Heart rate, Heart Function, Obstetrics, Speed, Time
10	Body Mark	Body marks with probe mark display
11	Character Display	ID, Date, Time, Frequency, Gain, Zoom, Focus etc.
12	Power Requirement	AC 220V/110V, 50Hz/60Hz
13	Gray Scale	256
14	Cineloop	64 frames for B mode, 256 seconds for M mode
15	Image reverse	Left-right, Up-down and Positive-negative
16	Frequency conversion	Tri-step multi-frequency, broad band

### Standard Configuration:

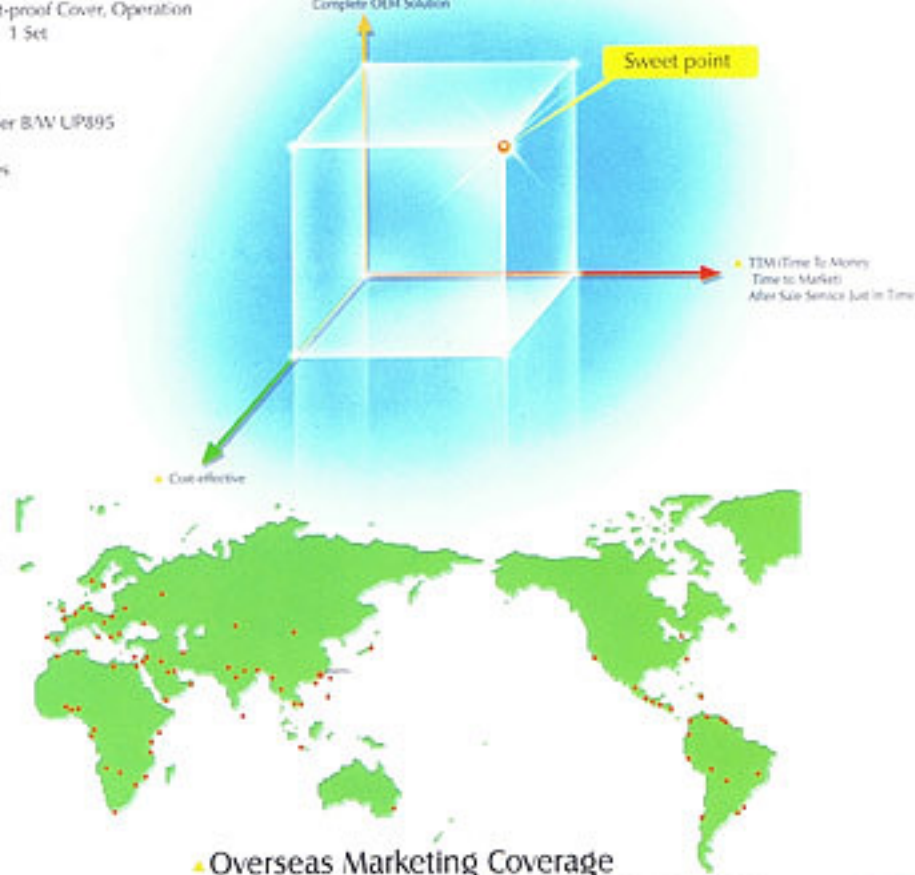
- \* Main unit with digital scan converter 1 Unit
- \* 2.5MHz~5MHz Convex Probe 1 Pc
- \* Accessories (Dust-proof Cover, Operation Manual, Cord.) 1 Set

### Options

- \* 10-inch Monitor
- \* Sony Video Printer BAW UP895
- \* Mobile cart
- \* Multi-kind probes

### Products Roadmap:

- Ultrasound scanning system for medical application
- Ultrasound scanning system for veterinary use
- Advanced Transducer Technology
- Complete OEM Solution



### • Overseas Marketing Coverage

The company opens all the ways for OEM business and is keen to find distributors to help establish worldwide sales channels.

Specifications and appearance are subject to change without prior notice.

Add: #77, Jinsha Road, Shantou 515041, China

Tel: (86)754-8250150 Fax: (86)754-8251499

Http: //www.slui.com E-mail: slui@slui.com

